



Mother nature has given us a wonderful head start to a new season: If the November snowfall accumulation is any indication on what this winter is going to bring, riders can look forward to some of the best trail riding in Canada. Clubs, members and many dedicated volunteers have been working nonstop throughout the summer months preparing trails to ensure a great rider experience for the 2023 season.

With the early arrival of winter making our riders eager to get out and enjoy the snow, we would like to send a reminder to ride safely and responsibly.

Early season conditions include hidden hazards such as rocks, stumps, ruts and unfrozen water holes which may be lying just below the freshly fallen snow. Dress in layers and be sure to wear proper clothing that is windproof and water repellent. Plan your route and never snowmobile alone.

Trail Pass Report

Trail passes went on sale October 1, and have since been distributed to multiple vendors across the island. In comparison to this time last year, we are happy to report that online pass sales have doubled!

Last season, we had a number of members lose their passes and required replacements due to the lack of adhesive on the sticker. This year, we've went with a higher quality sticker to resolve the issue of them not properly sticking to machines. We would like to remind snowmobilers that passes are required to be affixed to your machine in a visible area, in order to be valid.

We want to thank our pass holders for their continued support and we are looking forward to another season!

Submitted by Tara Howell

Austin Cassell is Volunteer of the Year

Austin Cassell, President of the North Eastern Trail Riders Club, is named the 2021/22 Kevin Sweetland Volunteer of the year. On behalf of Austin, Phyllis Randell accepted the award at our AGM on October 29.

Even during the Northern Peninsula's harshest winter conditions, it's not a rare site to see Austin underneath a groomer at any time, day or night, completing necessary repairs to get

it back in working order as quickly as possible. He is always there to lend a helping hand whether it be bridge repairs, culvert installations, brush cutting, or chalet preparedness, just to name a few. He is heavily involved in fundraising and snowmobiling events, most notably King of the Bay Races, and is very well known and highly respected within the community.

Austin's countless hours of volunteer work and dedication to the North Eastern Trail Riders Club does not go unnoticed. If you see him around, be sure to thank him or give him a thumbs up! Without volunteers, we wouldn't have the trail system that we have today. Congratulations, Austin, from everyone at the NLSF!



North Eastern Trail Riders

Newfoundland and Labrador Hydro reminds you to please

Make Every Ride A Safe Ride

A white silhouette of a person riding a snowmobile is positioned on the right side of the banner, set against a blue background with white snowflakes and a white snowbank at the bottom.

- Ensure your snowmobile is working properly.
- Avoid riding along power lines and watch for guy wires.
- Steer clear of high snow banks around overhanging power lines.
- Proceed slowly near utility workers, vehicles or equipment.
- Stay off the ice, including reservoirs and rivers near hydroelectric dams where ice is unstable.

NLSF Chair Update

As Board Chair of the NLSF, I'm excited to be moving into another snowmobile season and I would like to take this opportunity to thank all of those who purchase trail passes and support what we are doing.

Each year we are working harder and harder to be a major player and big part of winter tourism in the province of Newfoundland and Labrador.

Over the past number of years, we have been constantly improving our fleet of groomers. Since 2015 we've purchased 17 new groomers, as well as 5 new groomers and all new drags this year that are ready to hit the snow. This allows us to provide a smoother and more stable trail system for our pass holders as we aim to give them the best possible experience that we can offer.



With our vast backcountry and approximately 3500 kilometers of groomed trails, there is a lot out there to enjoy this winter.

As we move into the future, we have also been striving to make the most of our trails by making them ATV/UTV accessible. Our goal is to provide a year round product, allowing everyone with an off road vehicle the opportunity to enjoy the great Newfoundland outdoors.

Let's hope for lots of snow and I look forward to meeting you on the trail this season.

Submitted by Bob Blundon



Electricity is everywhere you go, even if you're off the beaten path. Look for hazards that can be harder to see in winter conditions. Be cautious of guy wires and avoid power line rights-of-way.
newfoundlandpower.com/safety | 1-800-663-2802

WHENEVER. WHEREVER.
We'll be there.

NEWFOUNDLAND
POWER
A FORTIS COMPANY

Snowmobile and Moose Safety

Encountering moose while travelling on snowmobile trails is not uncommon as moose are often attracted to these trails, especially when snow depth increases. Compact trails cut through forested areas offer excellent travel corridors and feeding opportunities. Snowmobilers and moose both recognize the benefits of a compact groomed trail for travel, and moose are sometimes reluctant to leave the trail for the deeper, softer snow.

Moose Behavior....

A moose may react to stressful or perceived dangers ranging from a flight response to a fight response. In most encounters with moose, the animal will make all attempts to flee from the encounter. However, if the animal feels threatened, agitated or cornered, a fight response is not uncommon. Female moose with calves are the most unpredictable.

A moose may express its aggression first with a bluff, meaning it will approach, ears pinned and hair raised, often with a sideways motion to its head while licking its lips. These bluffs can be followed by an attack if the animal continues to perceive a threat.

Moose can be very reactionary to perceived threats, including encounters with snowmobilers.



Kyody Photo

Photo Credit: Mike McCarthy

Please consider the following if you encounter moose while snowmobiling:

- * If the moose does not leave the trail at the point of first encounter, it is advisable to stop your snowmobile and allow the animal to exit the area. Most moose will leave in a few minutes while others may take longer to vacate the area.
- * **NEVER** chase a moose with your snowmobile as this increases the risk of a flight or fight response, which can result in serious personal injury, injury to the animal and damage to snowmobiles. Such action also significantly raises stress levels of moose and increases the risk for injuries such as broken legs and splayed hips. Harassing a moose with a vehicle is **ILLEGAL** under the Wildlife Act and Regulations.
- * Moose use their front legs in most attacks and are very effective at causing injury by kick and trample.

If attacked by a moose....

- * Unlike other animals such as bears, it is advisable to flee from a potential encounter with a moose. If you encounter an aggressive moose, attempt to get out of the area immediately by snowmobile or running/walking. If this is not an option, try avoiding the animal by climbing a tree or hiding behind an object.
- * If you are attacked and no escape route is within reach, experts recommend curling into a ball-like position and protect your head and neck.

Thank you to **Fisheries, Forestry and Agriculture NL** for providing this important information.



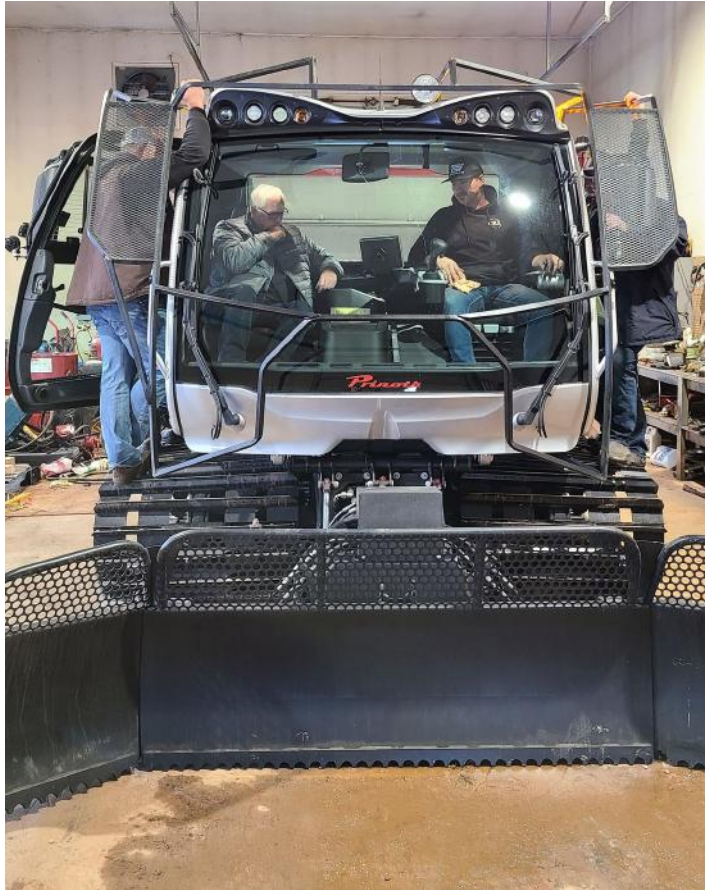
Trails & Groomer Update

Following the completion of trail improvement projects across the island, clubs and staff members are working diligently to ensure a smooth start to the upcoming grooming season. The NLSF has been extra busy in recent weeks with moving groomers and drags, including the new Tier 5 Husky snow groomers and new Mogul Master drags.

We were fortunate to have Mike Heino Jr. of The Shop Industrial visit us for a training session on November 19th, on the new machines with our guys who will be operating them throughout the winter. We would like to thank Mike for providing us with the expertise and advice to carry out operating and maintenance procedures properly, and safely. Travelling all the way from Ontario, he made quite the trek to Newfoundland to ensure that our organization is kept informed and up to date on all things grooming related.

We are looking forward to providing all supporters of the NLSF with a quality groomed trail across the island this winter. See you on the trails!

Submitted by Carolyn Compagnon



An advertisement for Irving Big Stop Restaurant. The background is a dark wood-grain texture. At the top, the "IRVING" logo is centered above the text "BIG STOP Restaurant". Below this, the text "Warm up with a homestyle meal on any trail you travel" is displayed in a white, serif font. In the center, a white plate is shown with a breakfast meal consisting of two sunny-side-up eggs, a pile of golden-brown hash browns, several strips of cooked bacon, and slices of ham. At the bottom, a yellow banner contains the text "Stop by any of our locations:" followed by a list of locations: "Clarenville | Deer Lake | Gander | Goobies | Donovan's (Mount Pearl)". Below the banner, the website "irvingoil.com" and social media icons for Facebook, Instagram, and Twitter are displayed.

New Directional Signage

Many riders have a specific destination in mind when planning a snowmobile trip, whether it be to a restaurant for lunch, or a loop around with several stops along the way. Many snowmobilers rely on navigation tools to help get to where they set out to go – GPS, trail apps and most importantly trail signs. Through our recent ACOA project investment we've acquired funds for new directional signage for all of our clubs across the island. The signage will remain consistent and look the same from club area to club area on a regional basis.

Our goal is to provide our riders with confidence and reassurance when travelling within our trail network.



Our weekly giveaway contest is back!

To show our appreciation for the support of our trail pass buyers we are doing a giveaway contest on NLSF swag every Friday until our early bird ends on December 15. To take part in our #freebiefriday weekly draws here's what to do:

1. Purchase a NLSF trail pass online (nlsfpermits.com), at one of our 80 vendors across the island, or at our office located in Deer Lake.
2. Post a picture of your trail pass to our Facebook page.

GOOD LUCK!

From your cozy cabin
to carving the trails.

Fast wireless home
Internet with truly
unlimited data.

Whatever your passion, wireless home Internet from Xplore gives you the speed and reliability you need to do what you want.

Call **1-855-624-0525** to sign up today.

Go beyond. fast.xplore.ca/nlsf



ANNUAL GENERAL MEETING 2022

Thank you to club members and guests who showed their support and attended our Annual General Meeting on October 29. We had great discussions around trail development, enforcement as well as future plans. We would also like to thank guest speaker, The Honourable Steve Crocker - Minister of Tourism, Culture, Arts and Recreation for coming out to say a few words.

We welcomed two new members to our board, and bid farewell to Chantelle Edmonds, with gratitude for her contributions over the past two years.

The successful candidates displayed great vision for the NLSF's growth for 2023 and as a result of the elections we are pleased to introduce our new board!



From left to right: Fraser Greening, Sherry Squires, Peter Troke (Vice-Chair), Matthew Swain (General Manager), Bob Blundon (Chair), Craig Mason, Craig Borden, Shellie Reid, Glenn Green, Jason Pond

TSI

THE SHOP INDUSTRIAL INC.

112 FIELDING ROAD, LIVELY, ON P3Y 1L5

1-800-663-3724

www.theshopindustrial.com

tsi@theshopindustrial.com

The Shop Industrial Inc. manufacturer of **MOGUL Master**
"The Grooming Professionals"



Pinoth

MOGUL Master



**On behalf of the NLSF staff and board,
we wish everyone a safe and
happy holiday season!**

Thank you

Sponsors and community partners



Newfoundland Labrador Snowmobile Federation, Inc.
7 Wellon Road, PO Box 3386, Deer Lake, NL, A8A 2G6
P: 709.635.4395 F: 709-635-4396
info@nlsf.org www.nlsf.org

On Sale Now

2022-23 TRAIL PASSES



Photo credit:
Donnie O'Keefe
& ISMA



Early Bird
(On/before Dec.15th)
\$105.00



Regular
(After Dec.15th)
\$162.00



Family Pass Rebate:

Rebate of \$12.00 available for 2nd & 3rd snowmobiles registered at the same civic address. Visit website for more information.



Merchandise Available:

The NLSF are proud to offer a selection of branded merchandise. Give us a call to get yours today!



709-635-4395 | www.nlsf.org

7 Wellon Dr. Deer Lake, NL A8A 2G6